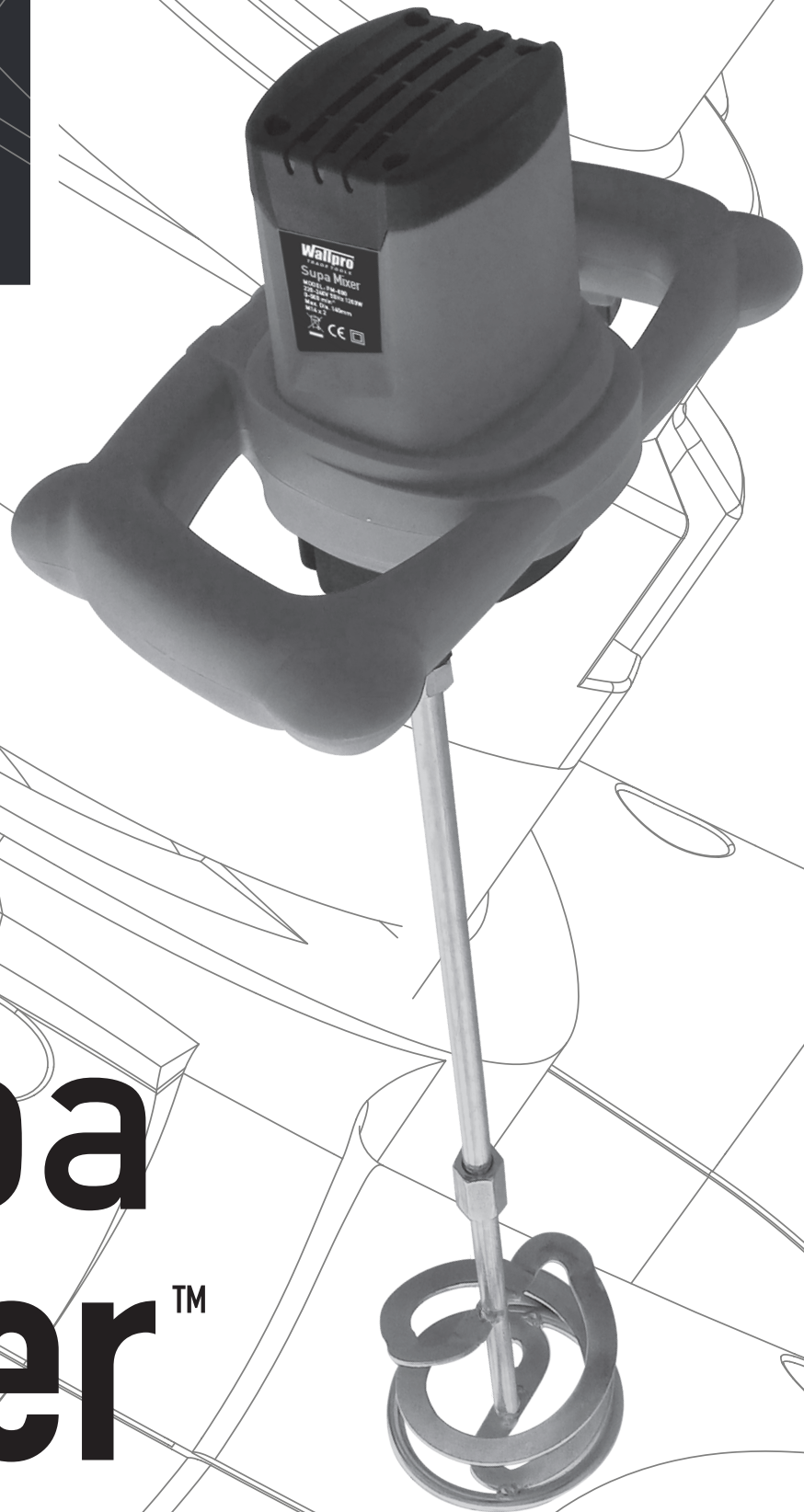


Wallpro[™]
TRADE TOOLS



Supa Mixer[™]

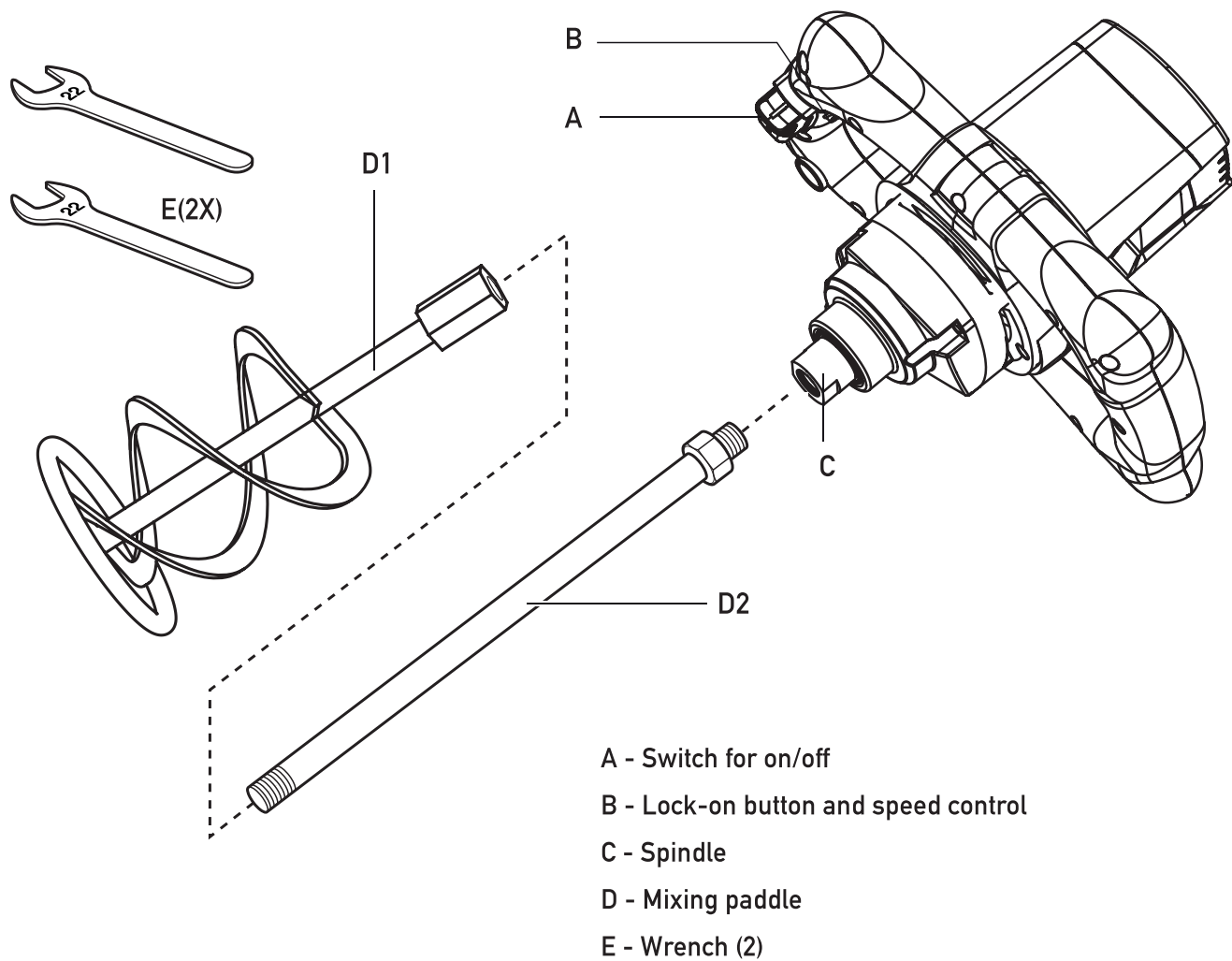
OPERATING INSTRUCTIONS

MODEL PM-600

Technical Specifications

Model No	PM-600
Voltage	220-240V / 50Hz
Power	1200W
No-load Speed	0-680 min ⁻¹
Mixing paddle Dia.Ømax	140mm
Coupling thread	M14 x 2
Protection class	II □

View of the Major Components & Accessories



General Safety Rules

⚠️ WARNING! Read all safety warnings and all instructions. *Failure to follow the warnings and instructions may result in electric shock, fire and/or serious injury.*

Save all the warnings and instructions for future reference.

The term “power tool” in the warnings refers to your mains-operated (corded) power tool or battery-operated (cordless) power tool.

1. WORK AREA SAFETY

- a) Keep work area clean and well lit. *Cluttered or dark areas invite accidents.*
- b) Do not operate power tools in explosive atmospheres, such as in the presence of flammable liquids, gases or dust. *Power tools create sparks which may ignite the dust or fumes.*
- c) Keep children and bystanders away while operating the power tool. *Distractions can cause you to lose control.*

2. ELECTRICAL SAFETY

- a) Power tool plugs must match the outlet. Never modify the plug in any way. Do not use any adapter plugs with earthed (grounded) power tools. *Unmodified plugs and matching outlets will reduce the risk of electric shock.*
- b) Avoid body contact with earthed or grounded surfaces such as pipes, radiators, ranges and refrigerators. *There is an increased risk of electric shock if your body is earthed or grounded.*
- c) Do not expose power tools to rain or wet conditions. *Water entering a power tool will increase the risk of electric shock.*
- d) Do not abuse the cord. Never use the cord for carrying, pulling or unplugging the power tool. Keep cord away from heat, oil, sharp edges or moving parts. *Damaged or entangled cords increase the risk of electric shock.*
- e) When operating a power tool outdoors, use an extension cord suitable for outdoor use. *Use of a cord suitable for outdoor use reduces the risk of electric shock*
- f) If operating a power tool in a damp location is unavoidable, use the residual current device (RCD) protected supply. *Use of an RCD reduces the risk of electric shock.*

3. PERSONAL SAFETY

- a) Stay alert, watch what you are doing and use common sense when operating a power tool. Do not use a power tool while you are tired or under the influence of drugs, alcohol or medication. *A moment of inattention while operating power tools may result in serious personal injury.*
- b) Use personal protective equipment. Always wear eye protection. *Protective equipment such as dust masks, non-skid safety shoes, hard hat or hearing protection used for appropriate conditions will reduce personal injuries.*
- c) Prevent unintentional starting. Ensure the switch is in the off-position before connecting to power source and/or battery pack, picking up or carrying the tool. *Carrying power tools with your finger on the switch or energising power tools that have the switch on invites accidents.*
- d) Remove any adjusting key or wrench before turning the power tool on. *A wrench or key left attached to a rotating part of the power tool may result in personal injury.*
- e) Do not overreach. Keep proper footing and balance at all times. *This enables better control of the power tool in unexpected situations.*
- f) Dress properly. Do not wear loose clothing or jewellery. Keep your hair, clothing and gloves away from moving parts. *Loose clothes, jewellery or long hair can be caught in moving parts.*
- g) If devices are provided for the connection of dust extraction and collection facilities, ensure these are connected and properly used. *Use of dust collection can reduce dust related hazards.*

General Safety Rules (continued)

4. POWER TOOL USE AND CARE

- a) Do not force the power tool. Use the correct power tool for your application. *The correct power tool will do the job better and safer at the rate for which it was designed*
- b) Do not use the power tool if the switch does not turn it on and off. *Any power tool that cannot be controlled with the switch is dangerous and must be repaired.*
- c) Disconnect the plug from the power source and/or the battery pack from the power tool before making any adjustments, changing accessories or storing power tools. *Such preventive safety measures reduce the risk of starting the power tool accidentally.*
- d) Store idle power tools out of the reach of children and do not allow persons unfamiliar with the power tool or these instructions to operate the power tool. *Power tools are dangerous in the hands of untrained users.*
- e) Maintain power tools. Check for misalignment or binding of moving parts, breakage of parts and any other conditions that may affect the power tools operation. If damaged, have the power tool repaired before use. *Many accidents are caused by poorly maintained power tools.*
- f) Keep cutting tools sharp and clean. *Properly maintained cutting tools with sharp cutting edges are less likely to bind and are easier to control.*
- g) Use the power tool, accessories and tool bits etc. in accordance with these instructions, taking into account the working conditions and the work to be performed. *Use the power tool for operations different from those intended could result in a hazardous situation.*

5. SERVICE

- a) Have your power tool serviced by a qualified repair person using only identical replacement parts. *This will ensure that the safety of the power tool is maintained.*

Safety Instructions for Electric Stirrer Machines

⚠ WARNING! Read and understand all instructions. Do not attempt to use the tool until you have read thoroughly and understand the operator's manual completely. Pay close attention to the safety rules including Dangers, Warnings and Cautions. If you use this tool properly and only for what it is intended. Failure to follow all instructions listed below may result in electrical shock, damage to drilling system and even personal injury.

⚠ WARNING! The purpose of safety symbols is to attract the user's attention to possible dangers. The safety symbols and the explanations with them deserve your careful attention and understanding. The safety warnings do not by themselves eliminate any danger. The instructions or warnings they give are not substitutes for proper accident prevention measures.

SAFETY SYMBOLS

⚠ CAUTION : indicates a potentially hazardous situation which, if not avoided may result in minor or moderate injury. It may also be used to alert against unsafe practices that may cause property damage.

⚠ DANGER : indicates an imminently hazardous situation which if not avoided will result in death or serious injury.

⚠ WARNING! indicates a potentially hazardous situation which if not avoided will result in death or serious injury.

Safety Instructions for Electric Stirrer Machines (continued)

BEFORE USING THIS TOOL

⚠ WARNING : Some dust created by the power sanding, sawing, grinding, drilling and other construction activities contains chemicals known to cause cancer, birth defects or other reproductive harm. Some examples of these chemicals are:

- Lead from lead-based paints,
- Crystalline silica from bricks, cement and other masonry products,
- Arsenic and chromium from chemically treated lumber.

Your risk from these exposures varies, depending on how often you do this type of work. To reduce your exposure to these chemicals, work in a well ventilated area, work with approved safety equipment such as dust masks specially designed to filter out microscopic particles

⚠ WARNING : To reduce the risk of mistakes that could cause serious or permanent injury, do not plug the machine in until the following steps have been completed.

- Learn the use and function of the ON-OFF switch,
- Review and understand all safety instructions and operating procedures in this manual,
- Review the maintenance methods for this tool.

REDUCE THE RISK OF DANGEROUS ENVIRONMENT

- Use the machine in a dry, indoor place protected from rain,
- Place the machine so that neither the user nor bystanders are forced to stand in line with the mixing paddle. Thrown debris could injure people in its path.

⚠ WARNING : To reduce the risk of injury or death from electrical shock make sure your fingers do not touch the plug's metal prongs when plugging or unplugging the Electric Stirrer machine.

BEFORE EACH USE INSPECT YOUR MACHINE

Disconnect the Electric stirrer Machine. To reduce the risk of injury from accidental starting.

- Check for proper alignment of moving parts,
- Safety Instructions for Electric Stirrer Machines
- Check for damaged electric cords,
- Check for binding of moving parts,
- Check for broken parts.
- Check to ensure stable mounting,
- Check for other conditions that may affect the way the machine works.

MAINTAIN TOOLS WITH CARE.

Keep the machine clean for best and safest performance. Follow instructions for lubricating.

Safety Instructions for Electric Stirrer Machines (continued)

TO REDUCE THE RISK OF INJURY FROM JAMS, SLIPS OR THROWN PIECES

- To reduce the risk of burns or other fire damage, never use the machine near flammable liquids, vapors or gases.
- Keep Work Area Clean. Cluttered areas and benches invite accidents. Floor must not be slippery.

KNOW YOUR MACHINE.

Read and understand the operator's manual and labels affixed to the tool. Learn its applications and limitations as well as the specific potential hazards peculiar to this tool. To reduce the risk of injury from accidental contact with moving parts, don't do layout, assembly, or setup work on the machine while any parts are moving.

REDUCE THE RISK OF ACCIDENTAL STARTING.

Make sure switch is "OFF" before plugging tool into a power outlet.

PLAN YOUR WORK.

Use The Right Tool. Don't force tool or attachment to do a job it was not designed to do.

DRESS FOR SAFETY

- For dusty operations, wear a dust mask or respirator along with safety goggles.
- Do not wear loose clothing, neckties or jewelry (rings, wrist watches). They can get caught and draw you into moving parts.
- To avoid contact with hot metal, wear protective gloves.
- Wear non-slip footwear.
- Tie back long hair.
- Roll long sleeves above the elbow.
- Noise levels vary widely. To reduce the risk of possible hearing damage, wear ear plugs or muffs.

WHENEVER MACHINE IS RUNNING

⚠ WARNING : Don't allow familiarity (gained from frequent use of your Electric Stirrer machine) cause a careless mistake. A careless fraction of a second is enough to cause a severe injury.

- If it makes an unfamiliar noise or vibrates a lot, stop immediately. Turn the tool off. Unplug the machine. Do not restart until finding and correcting the problem.
- Make sure all visitors, bystanders and children are clear of the tool and work piece.

BEFORE FREEING JAMMED MATERIAL

- Turn tool "OFF" by releasing trigger switch.
- Wait for all moving parts to stop.
- Unplug the machine.
- Before Leaving the Machine Never Leave Tool Running Unattended
- Turn power off.
- Wait for all moving parts to stop.
- Unplug.

Safety Instructions for Electric Stirrer Machines (continued)

⚠ WARNING : The operation of any power tool can result in foreign objects being thrown into your eyes, which can result in severe eye damage. Before beginning tool operation, always wear safety goggles or safety glasses with side shields and a full face shield when needed. We recommend Wide Vision Safety Mask for use over eyeglasses or standard safety glasses with side shields.

MAKE WORKSHOP CHILD PROOF

- Lock the shop.
- Disconnect master switches.
- Store tool away from children and others not qualified to use the tool.

⚠ LOOK FOR THIS SYMBOL TO POINT OUT IMPORTANT SAFETY PRECAUTIONS. IT MEANS ATTENTION!!! YOUR SAFETY IS INVOLVED.

Safe Use Instruction

If power cord is worn or cut, or damaged in any way, have it replaced immediately by a qualified electrician. If the grounding instructions are not completely understood, or if you are in doubt as to whether the tool is properly grounded check with a qualified electrician or service personnel.

⚠ WARNING : Do not permit fingers to touch the terminals of plug when installing or removing the plug from the outlet to avoid injury or possible death from electrical shock.

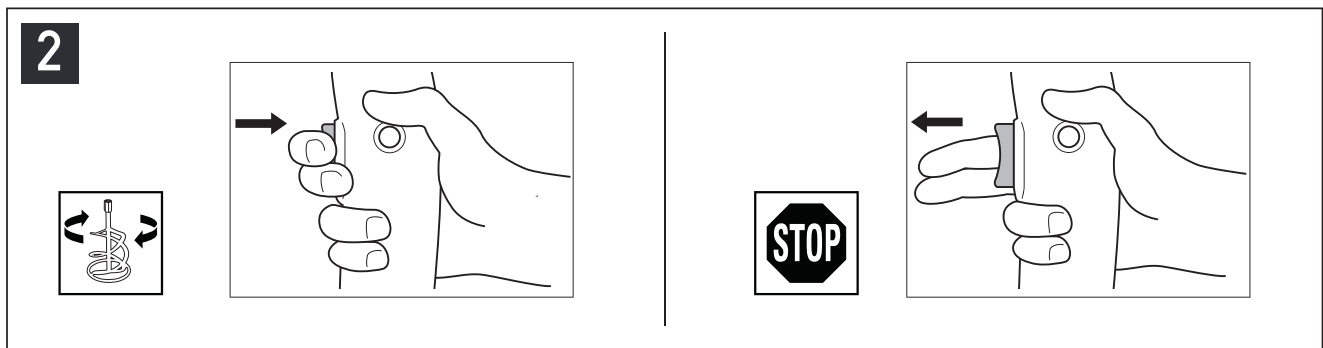
⚠ WARNING : If not properly grounded, this tool can cause an electrical shock, particularly when used in damp locations, in proximity to plumbing, or out of doors. If an electrical shock occurs there is the potential of a secondary hazard, such as your hands contacting the mixing paddle.

MOTOR SAFETY PROTECTION

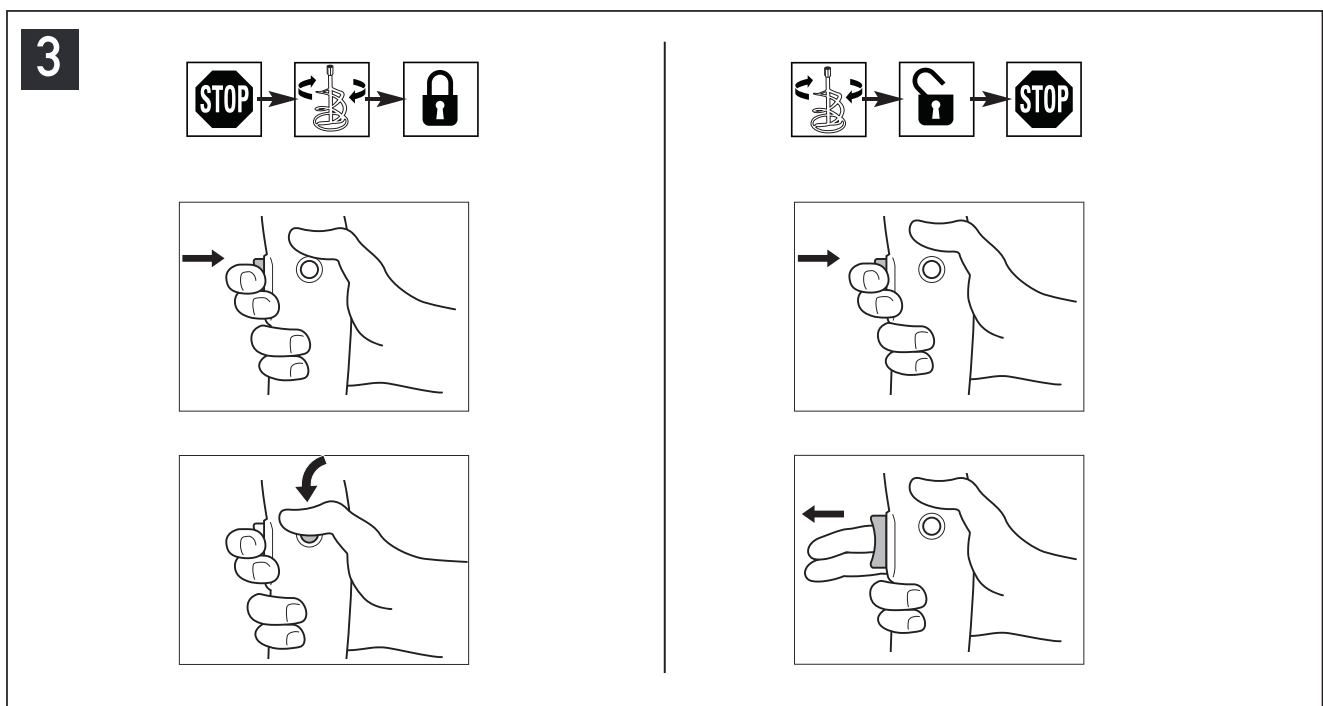
IMPORTANT: To avoid motor damage, this motor should be blown out or vacuumed frequently to keep dust from interfering with normal motor ventilation.

1. Connect this tool to a power source with the appropriate voltage for your model.
2. If the motor won't start, turn the switch off immediately and unplug the tool.
3. If the motor suddenly stalls while mixing, release the trigger switch, unplug the tool. The motor may now be restarted.
4. Fuses may "blow" or circuit breakers may trip frequently for the following reasons:
 - Motor Is Overloaded – Overloading can occur if you feed too rapidly or make too many start/stops in a short time.
 - Line voltages should not be more than 10% above or below the nameplate voltage. For heavy loads, however, the voltage at motor terminals must equal the voltage specified for your model.

Basic Operation



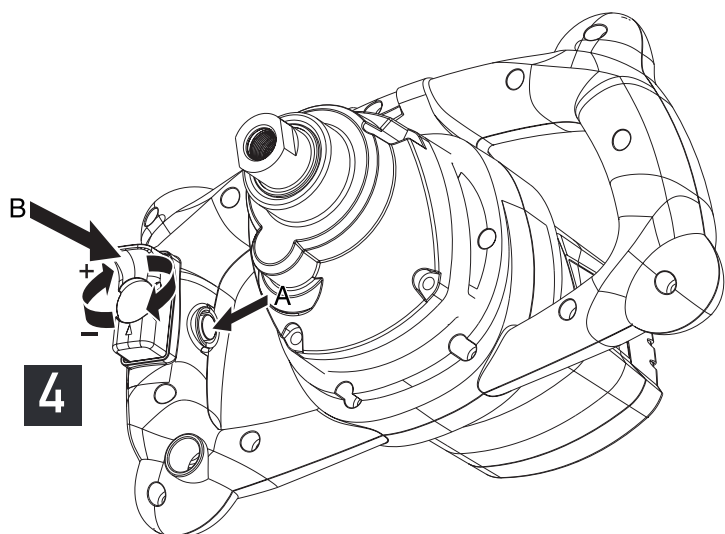
- On/off **2**



- Switch locking for continuous use **3**

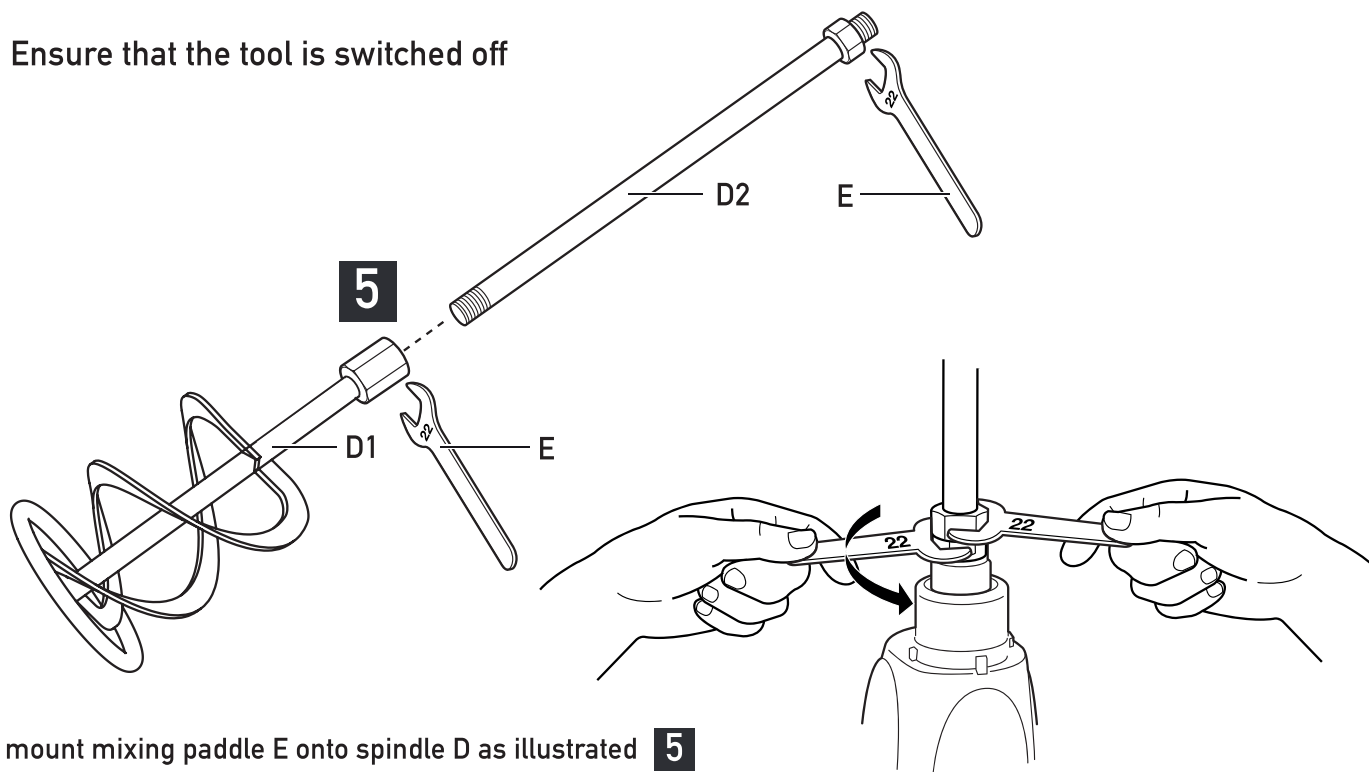
! be aware of the forces that occur as a result of jamming; hold the tool firmly with both hands and take a secure stance

- Speed control for smooth starting **4**



Operating the tool

! Ensure that the tool is switched off



- mount mixing paddle E onto spindle D as illustrated **5**
- connect plug to power source
- ensure the mixing container is securely positioned on the floor
- dip the mixing paddle into the substance to be mixed
- set wheel B to low speed
- switch on the tool
- gradually increase the mixing speed by turning wheel B to the desired maximum speed (so that the substance will not splash around and the tool will not be overloaded)

! Switch the tool off only when the mixing paddle is in the mixing container

- Electronic soft-start
Ensures reaching the maximum speed smoothly without a sudden impact when tool is switched on
- Holding and guiding the tool !

! While working, always hold the tool at the grey-coloured grip area(s)

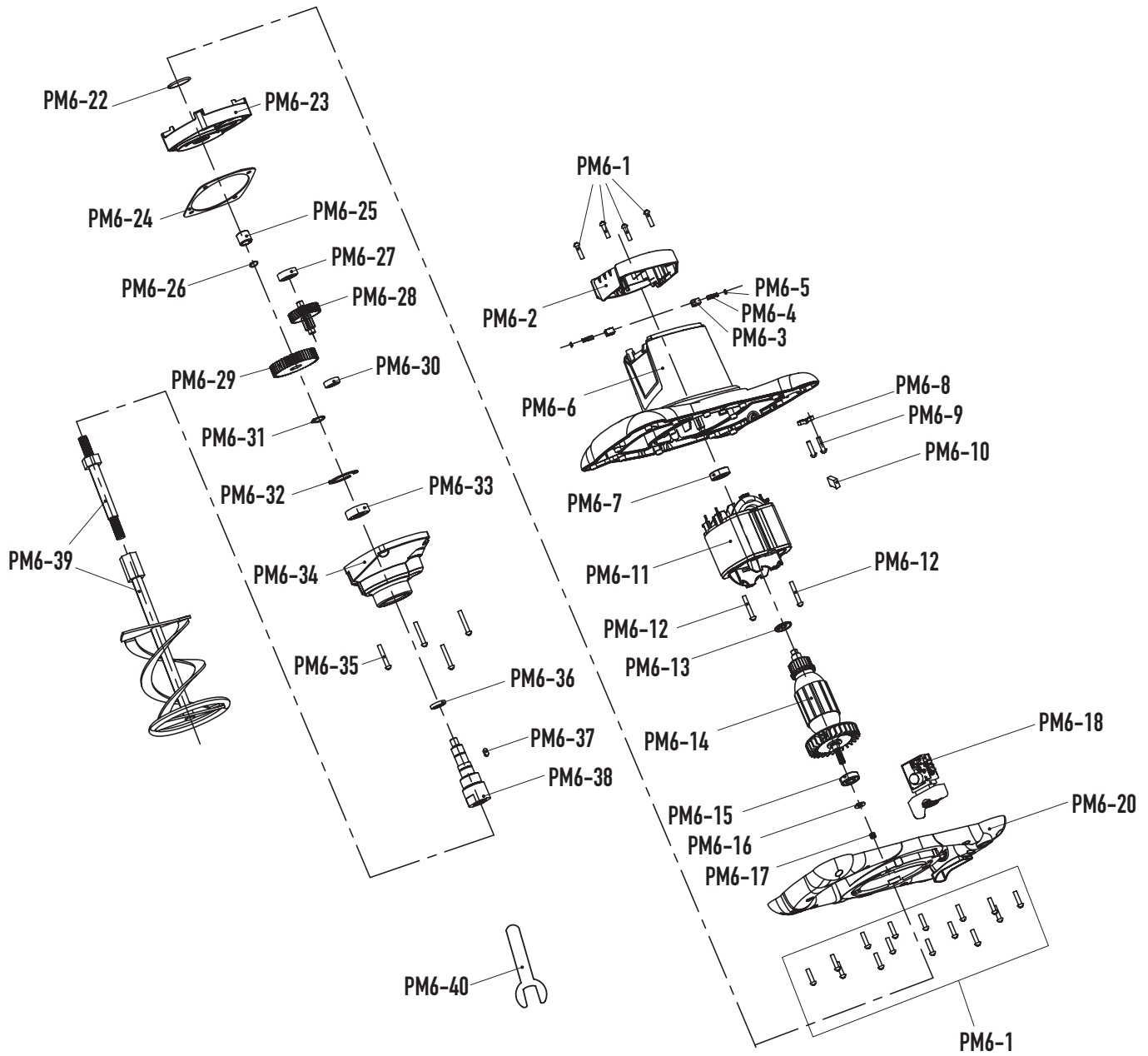
! Always hold the tool firmly with both hands

Maintenance / Service

- Always keep tool and cord clean (especially the ventilation slots)
 - always clean the mixer and functional parts after your mixing work
 - clean the tool with a dry, soft cloth (do not use cleaning agents or solvents)
 - clean ventilation slots regularly with a brush or compressed air

! Disconnect the plug before cleaning

Parts Diagram and List



No	Parts Name	Qty
PM6-1	Screw	19
PM6-2	Back cover	1
PM6-3	Brush holder	2
PM6-4	Carbon brushes	2
PM6-5	Carbon brushes cap	2
PM6-6	Housing	1
PM6-7	Bearing (608)	1
PM6-8	Cable plate	1

PM6-9	Screw	2
PM6-10	Capacity	1
PM6-11	Stator	2
PM6-12	Screw	2
PM6-13	Rotor insulator	1
PM6-14	Rotor	1
PM6-15	Bearing	1
PM6-16	Wool washer	1

Parts Diagram and List (continued)

No	Parts Name	Qty
PM6-17	Spring	1
PM6-18	Switch	1
PM6-20	Handle cover	1
PM6-22	O-ring washer	1
PM6-23	Middle cover	1
PM6-24	Paper washer	1
PM6-25	Needle bearing	1
PM6-26	Circlip	1
PM6-27	Bearing (627)	1
PM6-28	Secondary Gears	1
PM6-29	Large gears	1
PM6-30	Bearing (607)	1















PM6-31	Elastic collar 15	1
PM6-32	Elastic collar 32	1
PM6-33	Bearing (6002)	1
PM6-34	Gearbox	1
PM6-35	Screw	4
PM6-36	Oil seal	1
PM6-37	Key	1
PM6-38	Output shaft	1
PM6-39	Supa Mixer Blade	1
PM6-40	Spanner	2

Environment

- Do not dispose of electric tools, accessories and packaging together with household waste material

Symbols

- On the product, the rating label and within these instructions you will find among others the following symbols and abbreviations. Familiarise yourself with them to reduce hazards like personal injuries and damage to property.

V~	Volt, (alternating voltage)	mm	Millimeter
A	Amperes	n0	no load speed
Hz	Hertz	kg	Kilogram
W	Watt	dB(A)	Decibel (A-rated)
/min or min ⁻¹	Per minute	m/s ²	Meters per seconds squared
l	Liter	Nm	Newton meter
	Lock / to tighten or secure		Unlock / to loosen
	Note / Remark		Caution /Warning
	Read the instruction manual		Wear hearing protection
	Wear eye protection		Wear a dust mask
	Wear protective gloves		Wear protective, slip resistant footwear
	Switch the product off and disconnect it from the power supply before assembly, cleaning, adjustments, maintenance, storage and transportation.		
	This product is of protection class II. That means it is equipped with enhanced or double insulation.		
	Australian regulatory compliance mark		
	WEEE symbol. Waste electrical products should not be disposed of with household waste. Please recycle where facilities exist. Check with your Local Authority or local store for recycling advice.		

Warranty

Wallboard Tool Co Pty Ltd warrants that this product will be free from any defect in materials or workmanship for twelve (12) months from your Purchase Date (noted on your invoice or receipt).

At its discretion, Wallboard Tool Co Pty Ltd will either repair or replace your product, if it is found on inspection by Wallboard Tool Co Pty Ltd or a registered and approved Wallpro Service Agent to have any such defect.

WARRANTY CLAIM PROCEDURE.

To make a claim under this Warranty, you must:

- First contact the Wallboard Tool Co Pty Ltd distributor where you purchased the product
- Return the product to the distributor accompanied by the proof of purchase (invoice or receipt)

You will be responsible for the delivery to and collection of the product from the distributor.

WARRANTY APPLICATION.

This Warranty applies only:

- To a product sold to you by Wallboard Tool Co Pty Ltd or by a Wallboard Tool Co Pty Ltd distributor
- If you use the product for your private or business purposes

WARRANTY EXCLUSIONS.

This Warranty will not apply if any of the following occurs during the relevant warranty period:

- The product is serviced or repaired by anyone other than by a registered and approved Wallpro service agent
- You use a Product contrary to the technical or operating environment guidelines recommended in its user guide or manual;
- Any wear parts included in your product, (for example: including but without limitation: Velcro Foam Adaptors, Bearings, Bit Tips, Carbon Brushes, etc), reaches the end of its service life;
- A product's malfunction or failure to perform to Wallboard Tool Co Pty Ltd specifications results from:
 1. deliberate or accidental damage; or
 2. neglect or modification; or
 3. incorrect voltage or a power surge; or
 4. use of non-genuine replacement parts or accessories.

NON-GENUINE ITEMS.

If you use non-genuine replacement parts in the product, you may damage the product and may invalidate this warranty. Our goods come with guarantees that cannot be excluded under the Australian Consumer Law. You are entitled to a replacement or refund for a major failure and for compensation for any other reasonably foreseeable loss or damage. You are also entitled to have the goods repaired or replaced if the goods fail to be of acceptable quality and the failure does not amount to a major failure.

DETAILS OF THE COMPANY GIVING THIS WARRANTY:

Wallboard Tool Co Pty Ltd
30 Leda Drive, West Burleigh, Qld 4220, Australia
Phone: +61 7 5535 7655
Email: info@wbtc.com.au

The Wallboard Tools and Wallpro names as well as the Wallboard Tools and Wallpro Trade Tools logos are registered Trade Marks of Wallboard Tool Co Pty Ltd





The logo for Wallpro Trade Tools. The word "Wallpro" is in a large, bold, italicized sans-serif font with a horizontal line above it. Below it, "TRADE TOOLS" is written in a smaller, all-caps, bold sans-serif font. The background of the logo area is dark with white line art of various tools.

Wallpro[™]
TRADE TOOLS

Large, bold, black text providing customer service contact information.

CUSTOMER SERVICE
1300 653 177